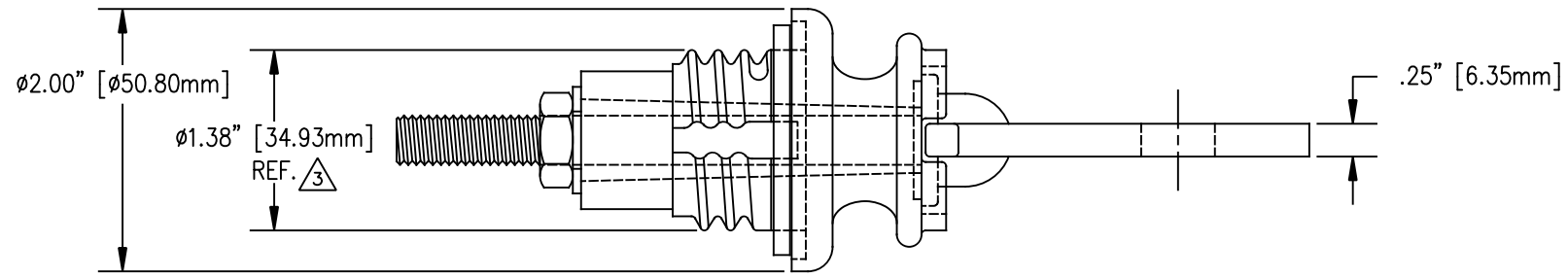
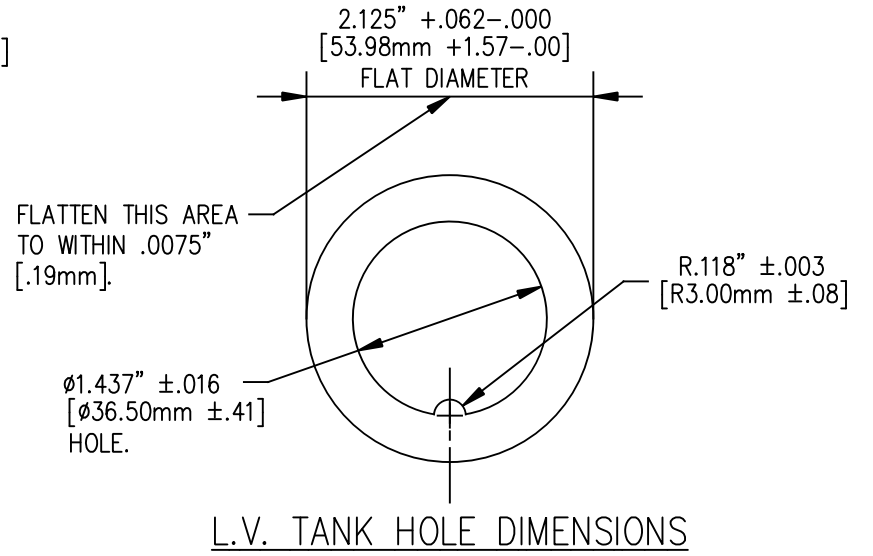
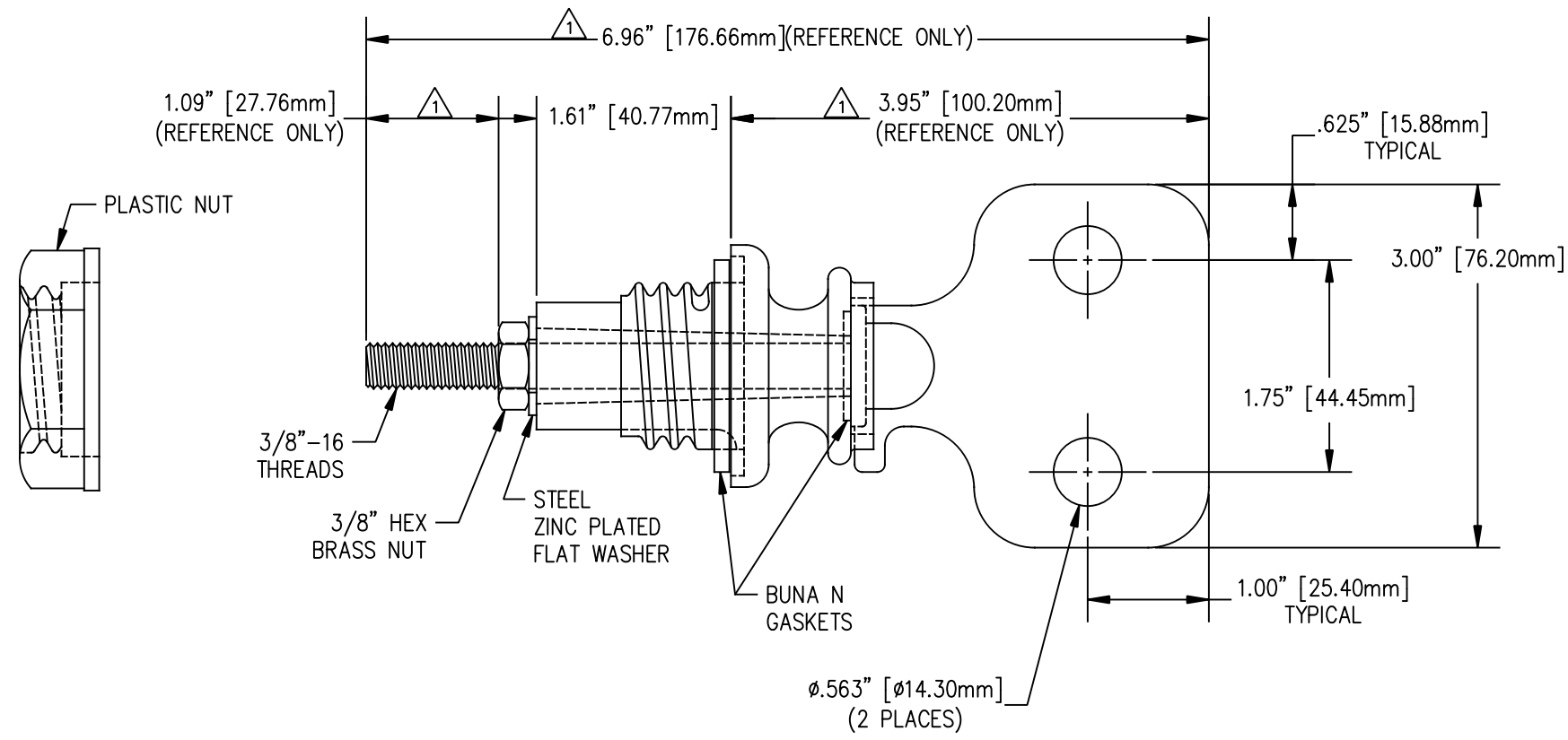


REVISIONS					
NO.	DATE	ECN #	REMARKS	BY	APPD.
1	6-16-00		EDITED DIMENSIONS.	CJT	LHE
2	1-24-02	HJ01-231	REMOVED TORQUE NOTE.	CJT	LHE
3	11-25-15	HJ14-269	Ø1.38 REF. WAS Ø1.39	CLS	BLB



MATERIAL:
 STUD - COPPER CDA 110.
 BODY - CDA 844 TIN PLATED UNLESS NOTED.

TOLERANCES (EXCEPT AS NOTED) DECIMAL $\pm .032\"/> $		H-J ENTERPRISES, INC. 3010 HIGH RIDGE BLVD. HIGH RIDGE, MO. 63049 USA PHONE 1-636-677-3421 FAX 1-636-376-1915			
		25 KVA L.V. BUSHING ASSEMBLY NON-PORCELAIN INSULATOR			
		MATERIAL (SEE ABOVE)		DRAWING NO. AS1016-009	
		CHK'D	APP'D	DATE 3-19-96	SCALE N.T.S.
ANGULAR $\pm 2^\circ$	DRAWN BY TLH	DATE 3-19-96	SCALE N.T.S.	DRAWING NO. AS1016-009	